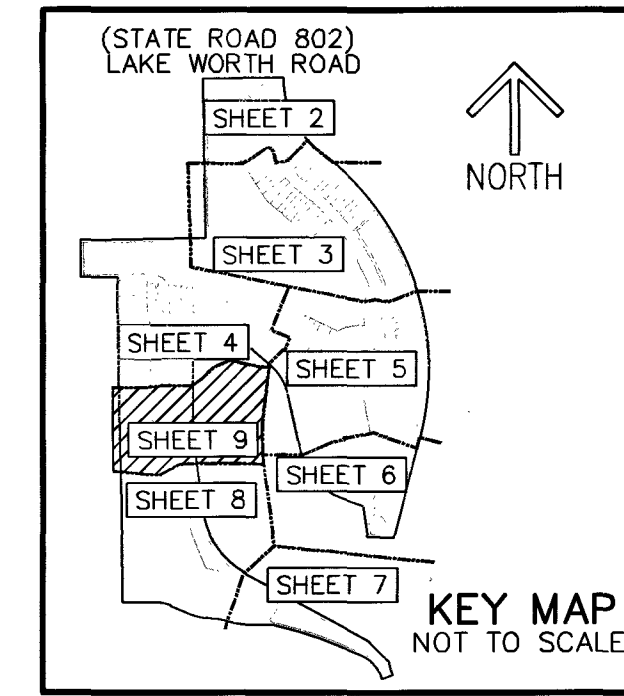


THIS INSTRUMENT PREPARED BY
DAVID P. LINDLEY
OF
CAULFIELD & WHEELER, INC.
SURVEYORS - ENGINEERS - PLANNERS
7900 GLADES ROAD, SUITE 100
BOCA RATON, FLORIDA 33434 - (561)392-1991
CERTIFICATE OF AUTHORIZATION NO. LB3591

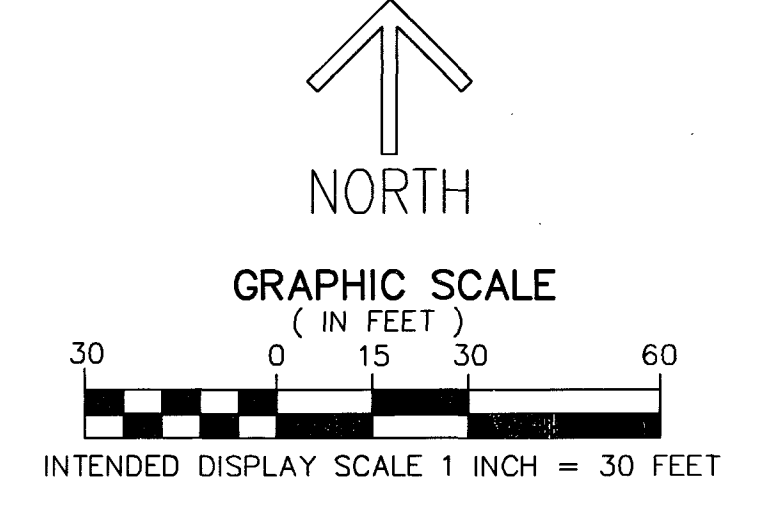
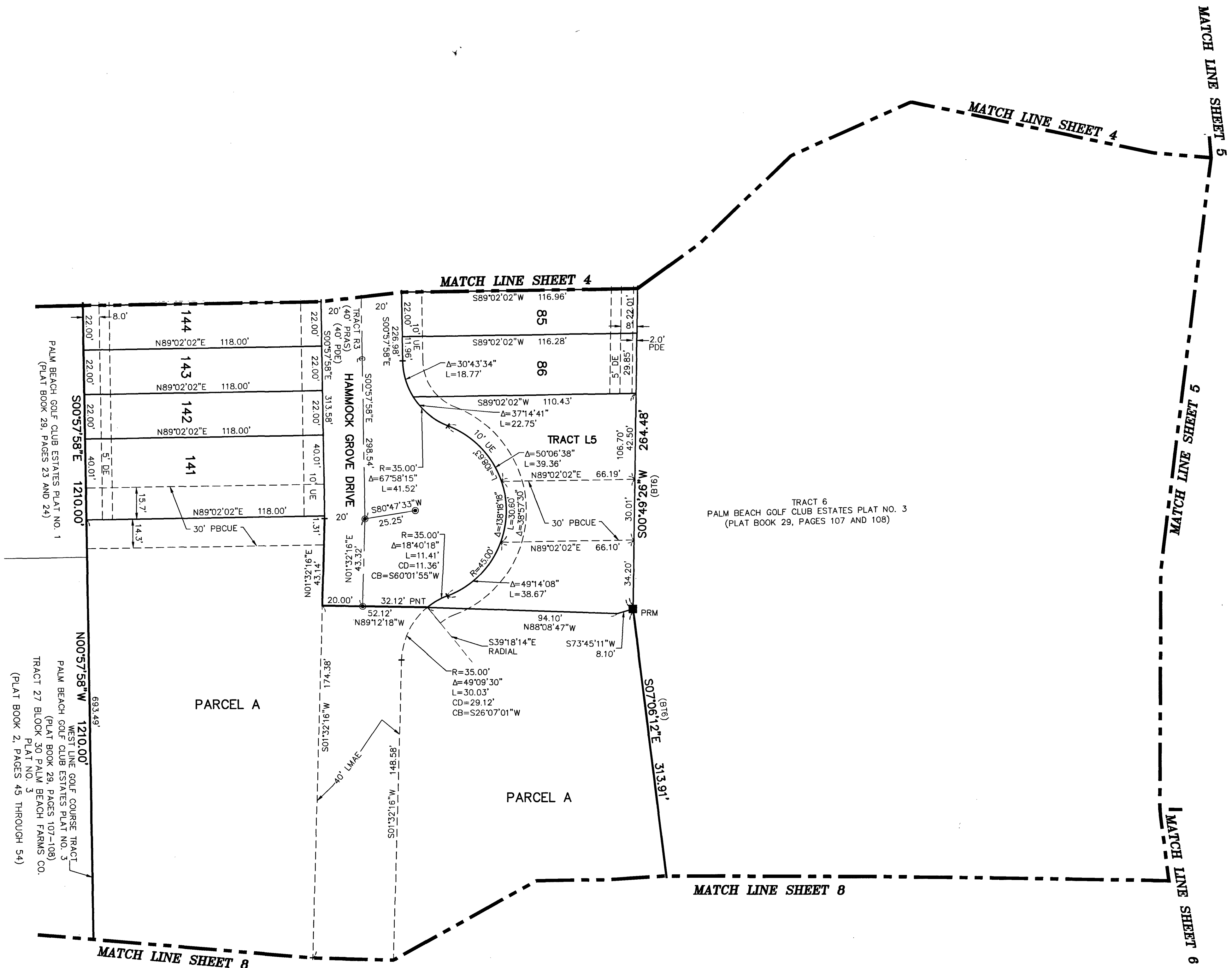
LAKESHORE AT THE FOUNTAINS

BEING A REPLAT OF A PORTION OF THE GOLF COURSE TRACT, PALM BEACH GOLF CLUB ESTATES PLAT NO. 3,
AS RECORDED IN PLAT BOOK 29, PAGES 107 AND 108 OF THE PUBLIC RECORDS OF PALM BEACH COUNTY, FLORIDA,
LYING IN SECTIONS 27 AND 28, TOWNSHIP 44 SOUTH, RANGE 42 EAST, PALM BEACH COUNTY, FLORIDA



28

SHEET 9 OF 9



NOTES
COORDINATES, BEARINGS AND DISTANCES
COORDINATES SHOWN ARE GRID
DATUM = NAD 83 (90 ADJUSTMENT)
ZONE = FLORIDA EAST
LINEAR UNIT = US SURVEY FEET
COORDINATE SYSTEM 1983 STATE PLANE
TRANSVERSE MERCATOR PROJECTION
ALL DISTANCES ARE GROUND, UNLESS OTHERWISE NOTED
SCALE FACTOR = 1.0000295
GROUND DISTANCE X SCALE FACTOR = GRID DISTANCE
BEARINGS AS SHOWN HEREON ARE GRID DATUM
NAD 83 (90 ADJUSTMENT), FLORIDA EAST ZONE.

LEGEND / ABBREVIATIONS
C - CENTERLINE
Δ - DELTA (CENTRAL ANGLE)
(BT6) - BOUNDARY TRACT 6
(PLAT BOOK 29, PAGES 107-108)
CB - CHORD BEARING
CD - CHORD DISTANCE
E - EASTING (WHEN USED WITH COORDINATES)
FND - FOUND
L - ARC LENGTH
LB - LICENSED BUSINESS
LMAE - LAKE MAINTENANCE ACCESS EASEMENT
LSE - LIFT STATION EASEMENT
L.W.D. - LAKE WORTH DRAINAGE DISTRICT
N - NORTHING (WHEN USED WITH COORDINATES)
O.R.B. - OFFICIAL RECORD BOOK
PBCUE - PALM BEACH COUNTY UTILITY EASEMENT
PC - POINT OF CURVATURE
PDE - PUBLIC DRAINAGE EASEMENT
PT - POINT OF TANGENCY
PNT - POINT OF NON-TANGENCY
(PRAS) - PRIVATE RESIDENTIAL ACCESS STREET
(P) - PALM BEACH GOLF CLUB ESTATES PLAT NO. 3
PLAT BOOK 29, PAGES 107-108
R - RADIUS
(R) - RADIAL LINE
(RPB) - ROAD PLAT BOOK 1, PAGES 128-135
ROAD PLAT BOOK 5, PAGES 125-138
R/W - RIGHT-OF-WAY
● PCP - DENOTES PERMANENT CONTROL POINT
NAIL AND METAL DISK STAMPED "PCP LB3591"
■ PRM - DENOTES PERMANENT REFERENCE MONUMENT
SET 4" x 4" x 24" CONCRETE MONUMENT WITH
ALUMINUM DISK STAMPED "C&W PRM LB3591"
△ - DENOTES HORIZONTAL CONTROL POINT